

SPACEKI®  
Smart spaces & products

MULTI-LEVEL RESIDENTIAL FENESTRATION SYSTEMS

# Frame your perspective

WINDOWS AND DOORS SYSTEMS



An architectural rendering of a modern interior space. The room features large, floor-to-ceiling windows and a glass door on the left. The ceiling is white with recessed lighting. A potted plant sits on a windowsill. The overall style is clean and minimalist.

## WHY US?

---

Spaceki Design LLP Facade Systems design and manufacture a wide range of high-performance aluminium fenestration systems for residential projects. Our window systems are designed with the same sight lines and interchangeable components for maximum flexibility, minimum wastage and cost-effectiveness. Our Sliding Doors & Windows, Casement Doors & Windows, Lift & Slide, Vision Plus, French Door, Tilt & Turn and Bi-Fold door systems have the highest acoustic performances available, keeping you warm during the winter and cool in the summer.

# Lift & Slide

Lift & Slide door system exhibits the best thermal insulation in all the sliding range, achieving transmissions as low as 0.9 W/m<sup>2</sup>K. · Available with up to six sashes with a maximum sash size of 3000mm x 3000mm or 300kg. · The opportunity to install double or triple glazed units up to 55mm significantly reduces noise pollution within the building. · The ST4-600 Lift and Slide mechanism allows the door to be lifted for an ultrasmooth opening action and lowered for excellent weather seals and air leakage reductions.

**Opening Possibilities:** Multiple opening possibilities up to 6 sashes.



# Tech Features

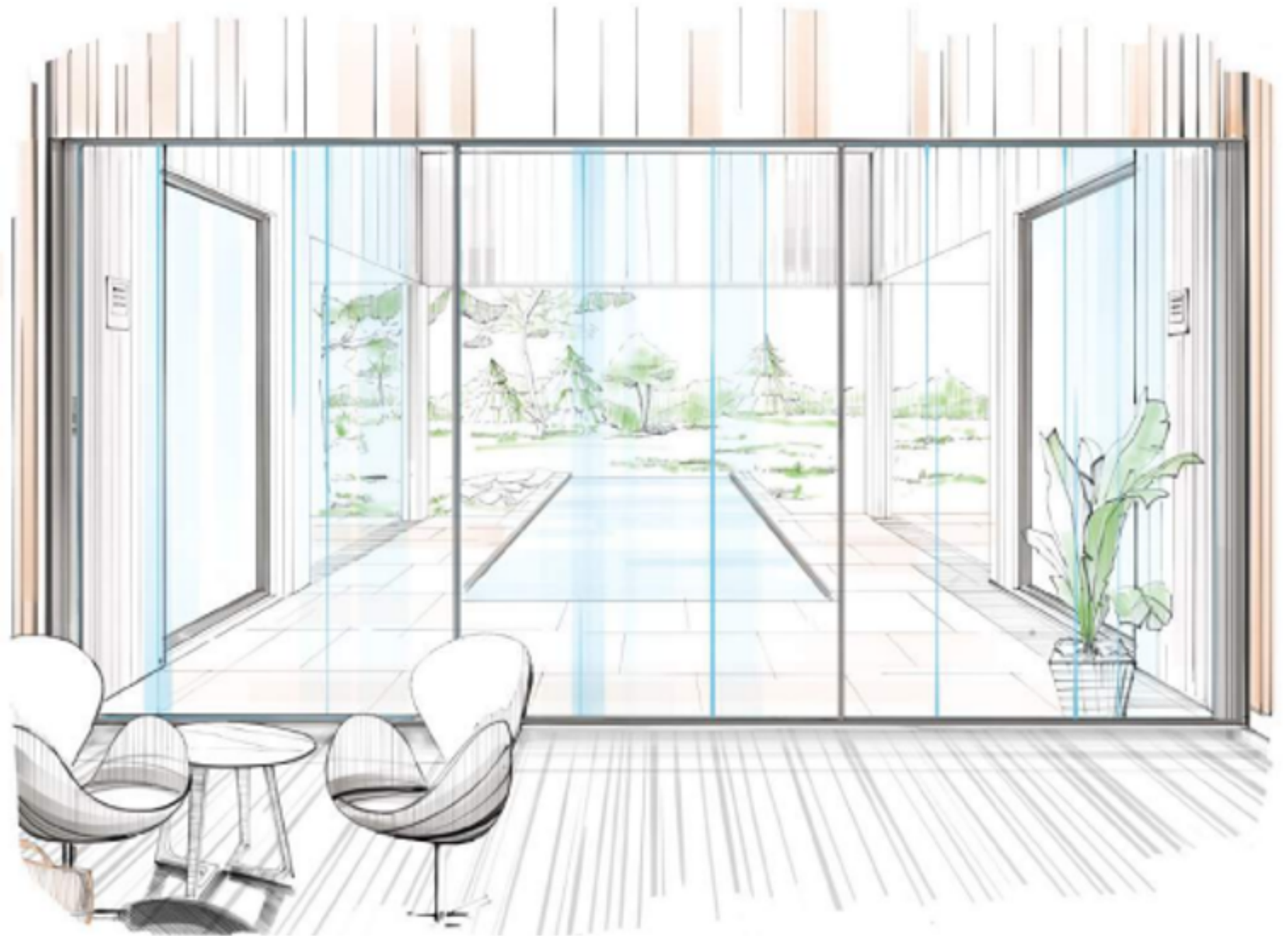
- Maximum sash size/weight 3000mm x 3000mm or 300kg.
- Available as manual or automated door system.
- Frames 160mm – 3 rails 251mm.
- Possible glazing thickness up to 24mm.
- 2mm profile thickness.
- Available in single and dual colour or anodized finish.
- Powder coating.



# Sliding Door

- Sliding door system is designed for large dimensions, to maximise luminosity.
- It's available as a motorized or manual sliding door.
- It displays a 94% glass surface, with a slimline central interlock showing only 25mm of aluminium section.
- This slider incorporates rollers in the frame and the sashes come with a stainless steel reinforced channel, making it one of the smoothest sliding doors across the whole range.

**Opening Possibilities:** Multiple opening possibilities up to 6 sashes and 90 degree corner sash.



# Tech Features

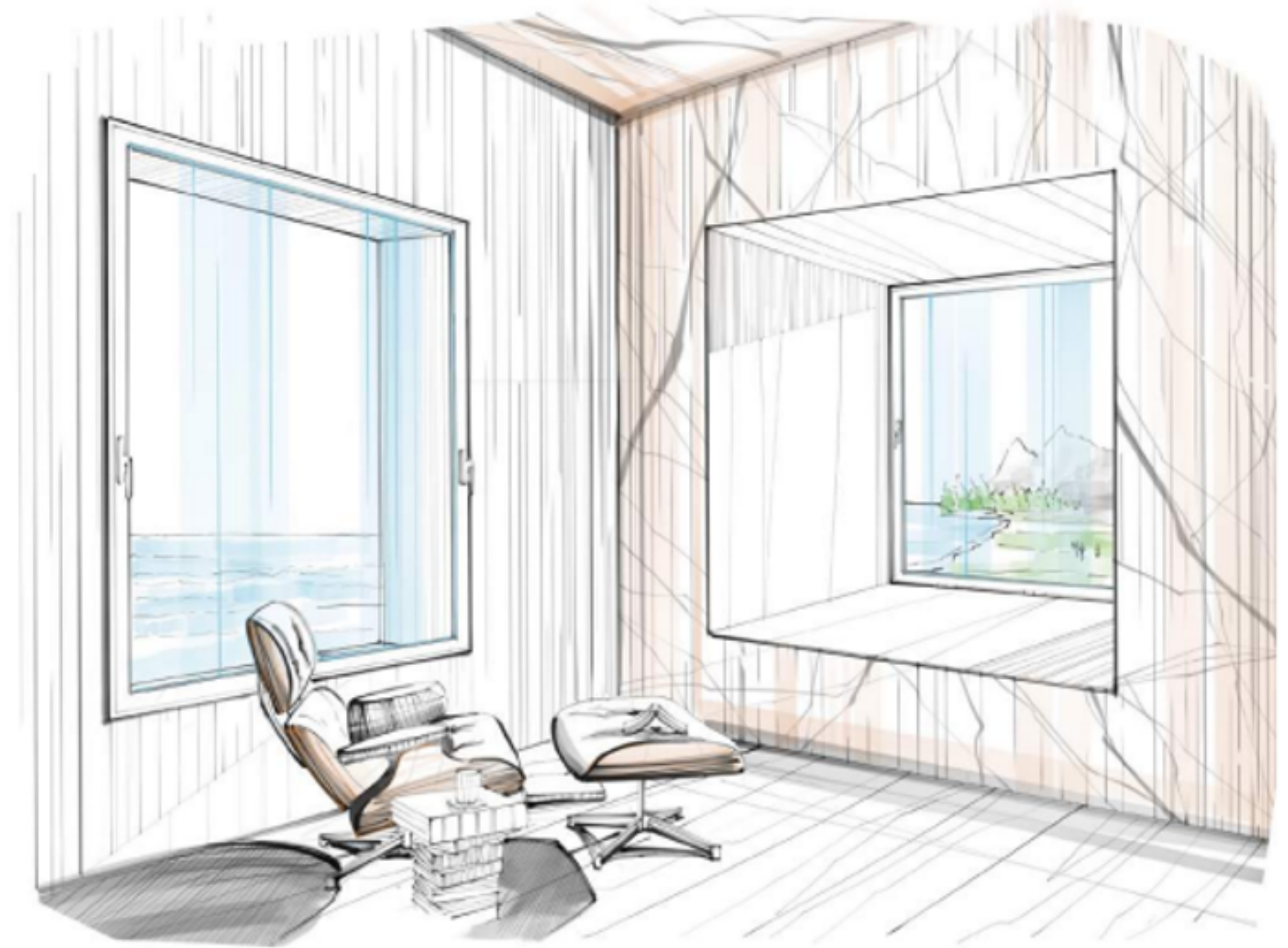
- Available at 90-degree angle.
- Frame: 180mm, 3 tracks 278mm.
- Profile thickness: 2.0mm.
- Glass: 24mm.
- Max size/sash: 3000 x 3000 (wind load dependent). · Max weight/sash: 300kg manual.
- Available in single and dual colour or anodized finish.
- Powder coating: (RAL Colours).



# Tilt & Turn

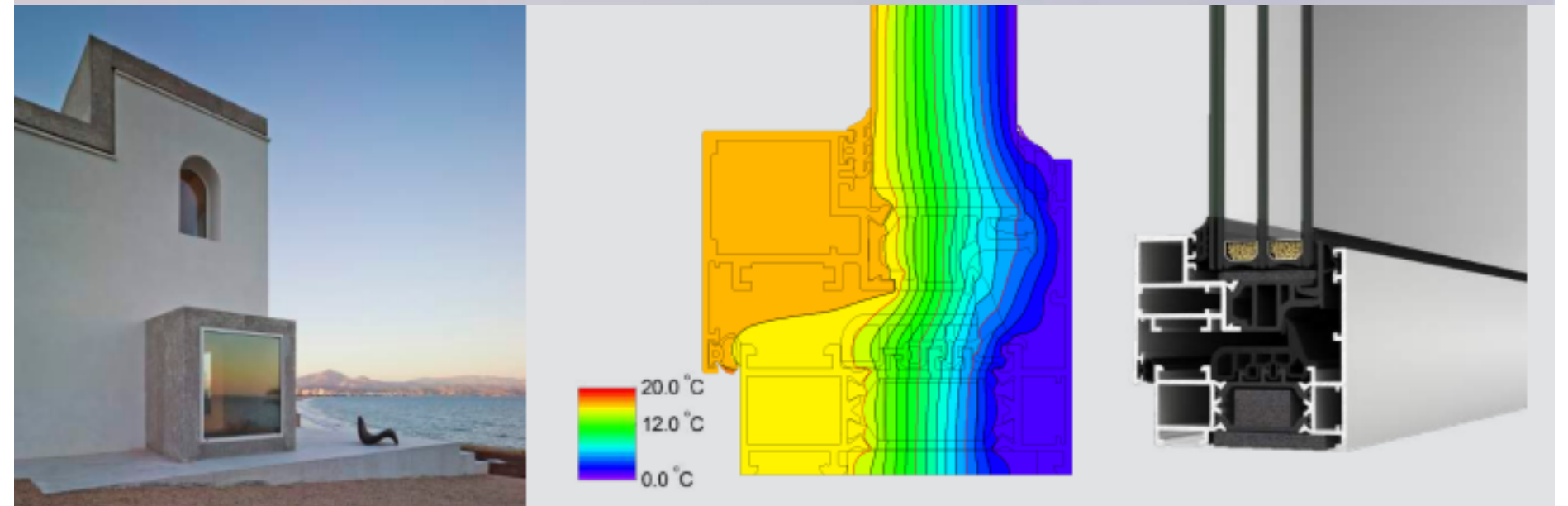
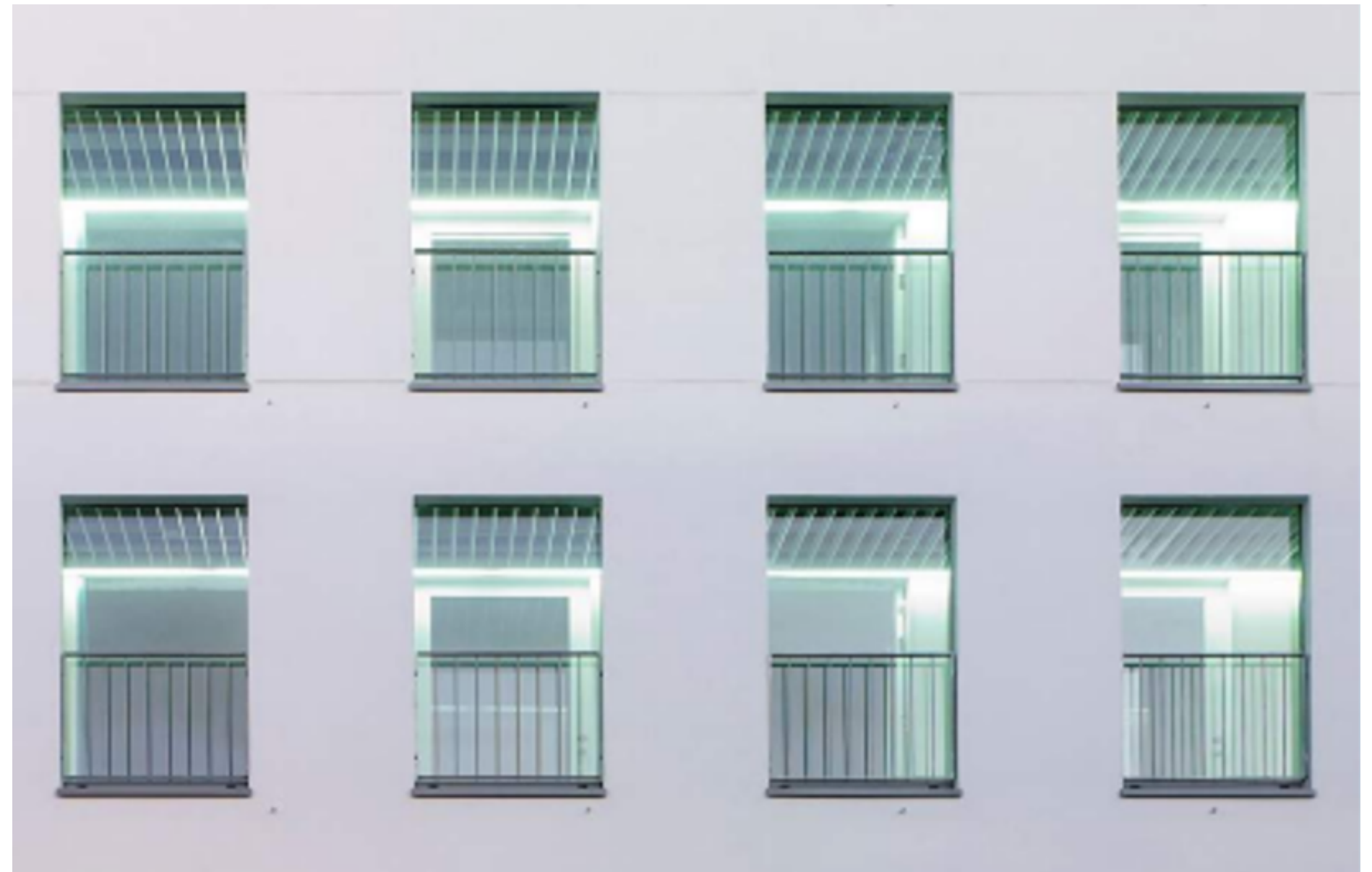
- Tilt & Turn window has a slim design, displaying only from the exterior of the building, resulting in an increase of natural light.
- Excellent thermal transmissions, maximizing its energy efficiency.
- This is due to a combination of a 35mm thermally broken area, and a polyamide core (upto 24mm) in the frame and sash.
- The possibility of installing high performance units up to 40mm thick, substantially increases the acoustic performance of the window system.
- It's fully tested to meet all the requirements of the BS EN regulations demonstrating excellent water tightness, air permeability, and wind-resistant values.

**Opening Possibilities:** Inward Opening Window, Tilt & Turn.



# Tech Features

- Slim design with a surface of from the exterior.
- 35mm thermally broken area
- Values as low as  $1.0\text{W}/\text{m}^2\text{k}$  of transmission.
- A possibility of fitting 24mm high-performance units.
- Available in single and dual colour or anodised finish.
- Powder coating.
- Fully weather tested to BS6375 by a registered testing laboratory.





# Casement Doors

- Casement Doors are designed with standard or aesthetically pleasing concealed hinges.
- Casement Door profile is 45mm, with glazing opportunities of up to 24mm maximising the acoustic performance.
- Maximum dimensions per leaf for standard and concealed hinges is 1000mm x 2250mm.
- Profile thickness - 2mm.
- Available as open in system.
- Fully tested to the highest standards by a registered testing laboratory.

**Opening Possibilities:** Available as a single or double door system with concealed hinges.



# Tech Features

- Available with aesthetically pleasing concealed hinges.
- Available as either open in only.
- Manufactured with our 45mm profile.
- Fully weather tested by a registered testing laboratory.
- Available in single and dual colour or anodised finish.
- Powder coating (RAL Code).



# Slide & Fold or Bi-fold Doors

- Slide & Fold Doors system is available max size/ sash 1000mm x 2250mm or 120kg.
- They have internal opening possibilities with an even or odd number of sashes.
- With its thermally efficient glass ranging from 8mm to 24mm the Bi-Fold door has an excellent thermal performance.
- The design on this system allows you to insert the bottom of the frame into the pavement, leaving the threshold completely hidden.
- The wheels and rollers are also concealed when the door is in the closed position providing a streamlined, aesthetically pleasing finish.

**Opening Possibilities:** Multiple Opportunities up to 14 sashes.



# Tech Features

- Frame 73mm.
- Sash 73mm.
- Maximum glazing opportunities 45mm.
- Opening possibilities folding up to 6 sashes.
- Profile thickness 1.8mm to 2.0mm.
- Maximum size/sash 1000mm x 2250mm.
- Available in single and dual colour or anodized finish.
- Powder coating (RAL Code).

